

NETVAULT



APPLICATION PLUGIN MODULE (APM™)

Unique DB2 Features:

- "Hot" backup
- Multiple backup modes
- Easy to use graphical user interface
- Selectable database backup operations
- Multiple database servers operating on one machine

NetVault Features:

- Uses native NetVault API for application integration
- Easy to use administration GUI for UNIX, NT, and Linux
- Point and click install of APM to servers or clients across networks
- Extensive media verification
- Threshold-triggered backup
- Allows pre and post processing scripts
- Supports raw devices and file systems
- Extensive low level error checking, logging and reporting
- TurboVault provides tunable shared main memory and block size for optimized performance
- Local or remote backup and recovery
- SAN LAN-free backup
- Duplication for off-site disaster recovery
- Dynamically Shared Devices (DSD™) allows library sharing across SANs or shared SCSI
- DirecSAN™ client transfer eliminates the backup server from the data path for maximum SAN performance
- Disk staging for increased performance across networks
- Supports as many data streams as there are devices
- Standard, non-proprietary tape formats, CPIO for UNIX and MTF for NT

DB2™ APM

As storage environments have experienced rapid growth, so has the importance of data management and storage. The increasing size and number of DB2 applications brings to the forefront the need for a storage management solution that protects important corporate assets while keeping the application running and available. The DB2 Universal Database application module for NetVault 6 increases application availability by providing fast, online backups of DB2 databases.

Storage Management for DB2 Administrators

The DB2 Application Plugin Module (APM) provides increased application availability via fast, online backup of DB2 databases in UNIX, Linux, and Windows™ NT environments. The APM includes a wide variety of important features such as hot backup, support for multiple database servers on a single machine, a variety of backup operations and selectable backup options.

Online mode: With the NetVault DB2 APM, user databases remain online and fully accessible during backup operations, minimizing downtime for users.

Offline mode: Access to the database is in exclusive mode; only the NetVault backup job itself can be connected to the database.

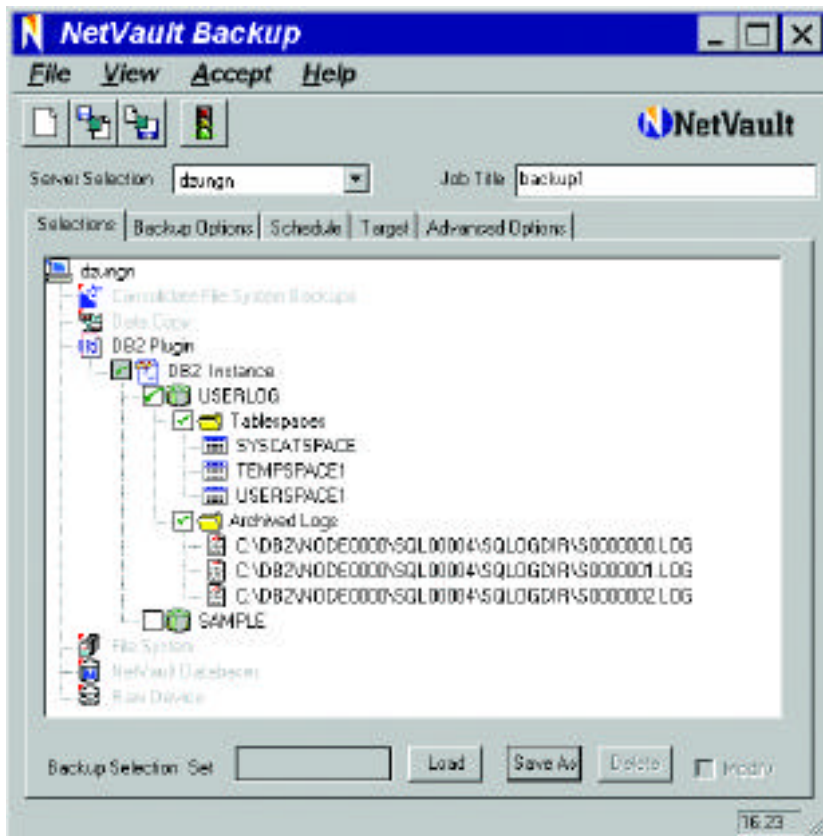
Support for Multi-homing: The DB2 APM displays all available servers, even when multiple database servers are operating on one machine. Backup and restore operations can be performed on any or all available DB2 servers.

Selectable Database Backup Operations: The DB2 APM allows you to backup tablespaces and offline archived log files.



BAKBONE ADVANTAGE

Replace complicated backup routines with one simple solution, NetVault.



The NetVault Graphical User interface provides easy access for selecting tablespaces and archived logs for backup.

NetVault

NetVault from BakBone Software, Inc., is a truly scalable, truly modular, high performance backup and recovery storage management solution. Available for UNIX, Linux, NT and Windows 2000 NetVault's unique architecture provides the flexibility for growth and continued enhancement as your information storage needs expand and change. NetVault supports SAN and NAS backups easily and effortlessly. An easy to use GUI delivers enterprise-wide control in distributed and centralized environments, NetVault is able to operate in multi-vendor networks and supports a broad range of servers, clients, databases, applications, storage media, and high performance devices.

About BakBone Software Corporation

Headquartered in San Diego, California, BakBone Software is a storage management software company with offices worldwide. BakBone Software is committed to developing and providing high-performance backup and recovery, archival, near-line and off-line storage solutions that address the problems of modern data storage management.



System Requirements:

- Client / Server Platform: IBM AIX, Linux, Sun Solaris, Windows NT, Windows 2000
- Backup Server Software: NetVault 6.01 or later
- Database Software: DB2 Universal Database 7.1 or later
- Client only install requires license
- No additional third-party software required

Corporate Headquarters

BakBone Software
10145 Pacific Heights Boulevard
Suite 900
San Diego, CA 92121
P: 858 450-9009
F: 858 450-9929
info@bakbone.com
www.bakbone.com

Asia

BakBone Software K.K.
Shinjuku Dai-ichi Seimei Bldg. 11F
2-7-1 Nishi-Shinjuku Shinjuku-ku
Tokyo 163-0711 Japan
P: +81-3-5908-2471
F: +81-3-5908-2472
info@bakbone.co.jp

Europe

BakBone Software Ltd.
Merck House
Seldown Lane
Poole, Dorset BH15 1TW
England
P: 44-(0) 1202-241000
F: 44-(0) 1202-249000
info@netvault.co.uk