

# NETVAULT



## APPLICATION PLUGIN MODULE (APM™)

### Unique SAP R/3 Features:

- "Hot" backup
- Seamless integration of SAP R/3 backup tools
- Raw data backups
- Backint command line interface support
- Parallel backup support
- Selectable backup operations

### NetVault Features:

- Uses native NetVault API for application integration
- Easy to use administration GUI for UNIX, NT, and Linux
- Point and click install of APM to servers or clients across networks
- Extensive media verification
- Threshold-triggered backup
- Allows pre and post processing scripts
- Supports raw devices and file systems
- Extensive low level error checking, logging and reporting
- TurboVault provides tunable shared main memory and block size for optimized performance
- Local or remote backup and recovery
- SAN LAN-free backup
- Duplication for off-site disaster recovery
- Dynamically Shared Devices (DSD™) allows library sharing across SANs or shared SCSI
- DirecSAN™ client transfer eliminates the backup server from the data path for maximum SAN performance
- Disk staging for increased performance across networks
- Supports as many data streams as there are devices
- Standard, non-proprietary tape formats, CPIO for UNIX and MTF for NT

## SAP R/3™ APM

Information is a growing and priceless asset for all organizations. SAP R/3 is the most widely accepted enterprise resource planning application on the market. With the growing size and importance of SAP R/3 data sets comes the critical need to protect its core asset – data. It is essential for administrators to backup and restore a SAP R/3 server with little or no impact on users.

### Storage Management for SAP R/3 Administrators

The SAP R/3 Backint Application Plugin Module (APM) provides increased application availability via fast, online backup of SAP R/3 databases in UNIX and Windows™ NT environments. The APM includes a wide variety of important features such as hot backup, integration with SAP R/3 backup tools, parallel backup support and selectable backup operations.

**Hot backup:** With NetVault's SAP R/3 APM, user databases may remain online and fully accessible during backup operations, assuring zero downtime for users.

**Seamless integration of SAP R/3 backup tools:** The SAP R/3 Backint APM seamlessly integrates NetVault and the existing SAP R/3 backup tools, enabling backups to be performed directly from SAP R/3.

**Support for raw data backup:** In UNIX environments, users may backup raw data including device, buffered files or pipes.

**Command line interface:** User jobs may be submitted using a console or command line interface. Using Backint command line options, all features provided by NetVault backup jobs are supported.

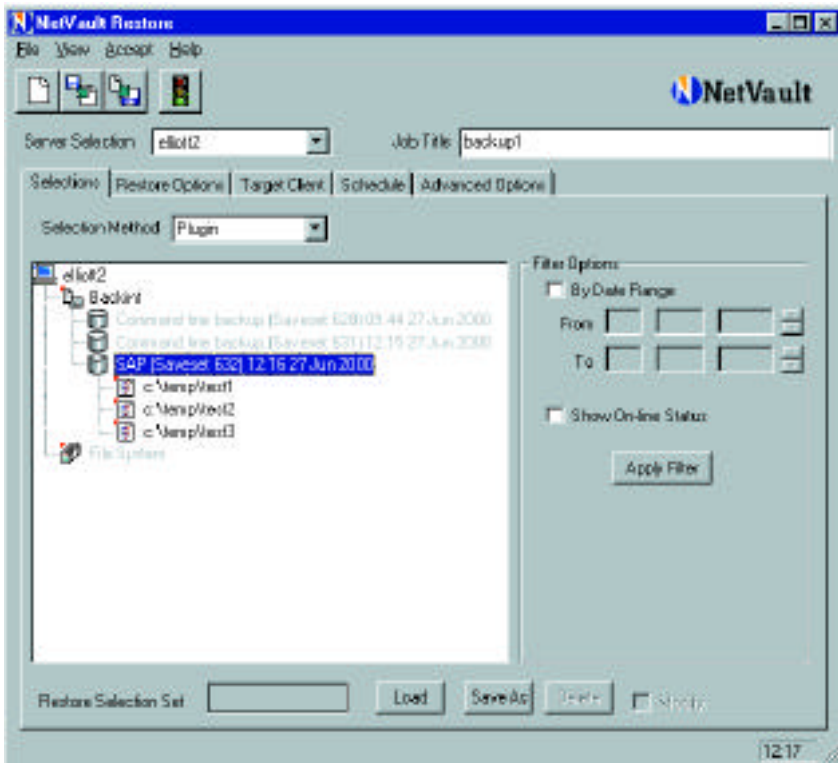
**Parallel backup support:** Backups may be split into multiple jobs for parallel execution and load balancing.

**Selectable backup operations:** Back up only what is needed with the SAP R/3 APM. Using a command line interface, administrators can specify individual files, directories or back up the entire system.



## BAKBONE ADVANTAGE

Replace complicated backup routines with one simple solution, NetVault.



The NetVault Graphical User Interface (GUI) provides granular access for viewing and management.

## NetVault

NetVault from BakBone Software, Inc., is a truly scalable, truly modular, high performance backup and recovery storage management solution. Available for UNIX, Linux, NT and Windows 2000 NetVault's unique architecture provides the flexibility for growth and continued enhancement as your information storage needs expand and change. NetVault supports SAN and NAS backups easily and effortlessly. An easy to use GUI delivers enterprise-wide control in distributed and centralized environments, NetVault is able to operate in multi-vendor networks and supports a broad range of servers, clients, databases, applications, storage media, and high performance devices.

## About BakBone Software Corporation

Headquartered in San Diego, California, BakBone Software is a storage management software company with offices worldwide. BakBone Software is committed to developing and providing high-performance backup and recovery, archival, near-line and off-line storage solutions that address the problems of modern data storage management.

## System Requirements:

- Client / Server Platform: Compaq Tru64 UNIX, HP-UX, IBM AIX, Linux, Sun Solaris, Windows NT, Windows 2000
- Backup Server Software: NetVault 6.01 or later
- SAP Software: SAP R/3 3.1 or later
- Client only install requires license
- No additional third-party software required

## Corporate Headquarters

BakBone Software  
10145 Pacific Heights Boulevard  
Suite 900  
San Diego, CA 92121  
P: 858 450-9009  
F: 858 450-9929  
info@bakbone.com  
www.bakbone.com

## Asia

BakBone Software K.K.  
Shinjuku Dai-ichi Seimei Bldg. 11F  
2-7-1 Nishi-Shinjuku Shinjuku-ku  
Tokyo 163-0711 Japan  
P: +81-3-5908-2471  
F: +81-3-5908-2472  
info@bakbone.co.jp

## Europe

BakBone Software Ltd.  
Merck House  
Seldown Lane  
Poole, Dorset BH15 1TW  
England  
P: 44-(0) 1202-241000  
F: 44-(0) 1202-249000  
info@netvault.co.uk

